

Manufacturing Instructions

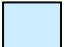
Instructions

All measurements in millimetres

All panels – 2mm medium strength aluminium sheet

Assembled using **M3 stainless steel slotted countersunk** screws and M3 clinch nuts spaced at 70mm

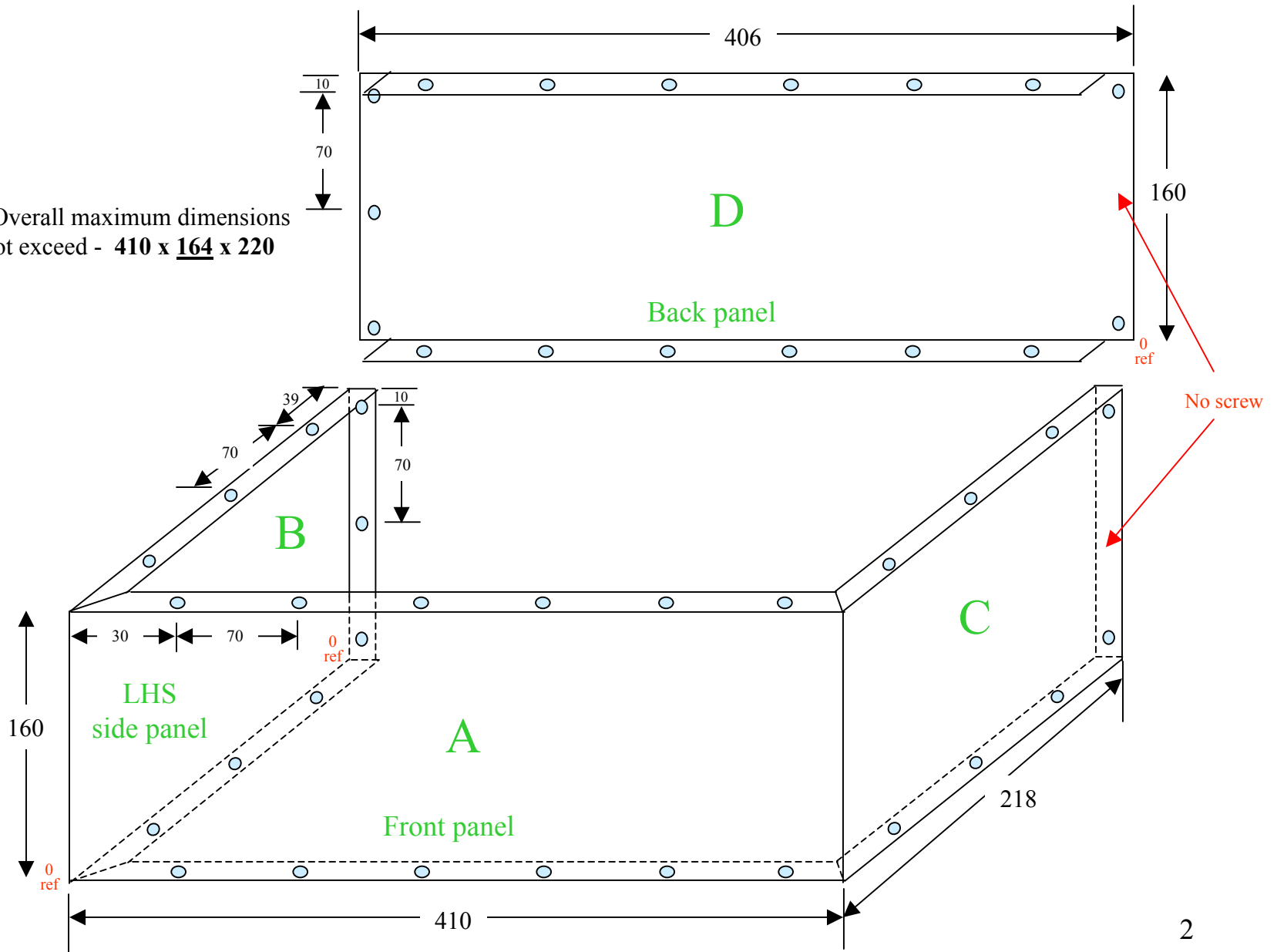
Flanges to be as narrow as possible (12mm?) to accommodate M3 clinch nuts

 holes are coloured in blue

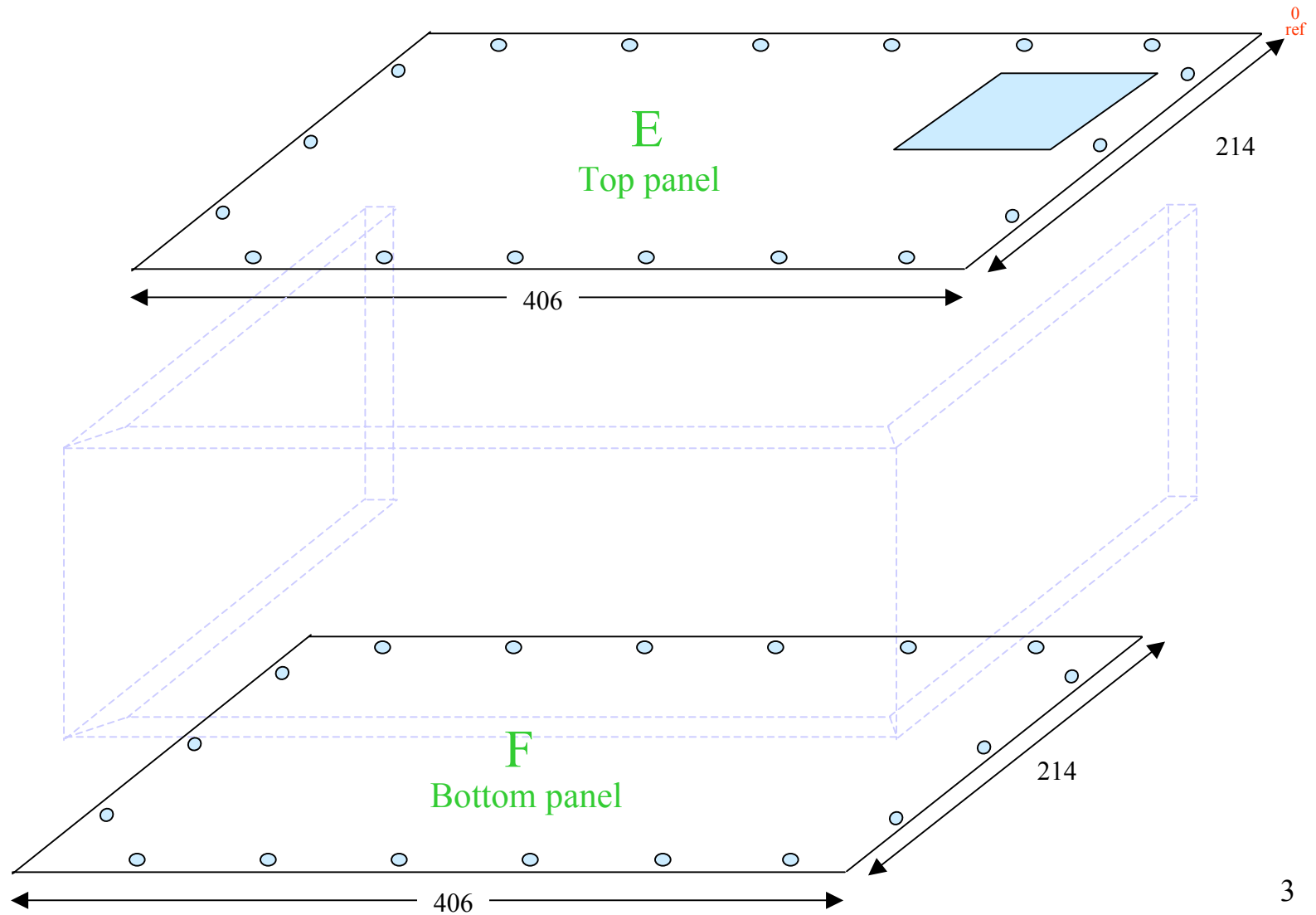
I've allowed 2mm for each fold, making the top, bottom and the length of the back 4mm less than the overall case size

Front, Back & Side Panel construction

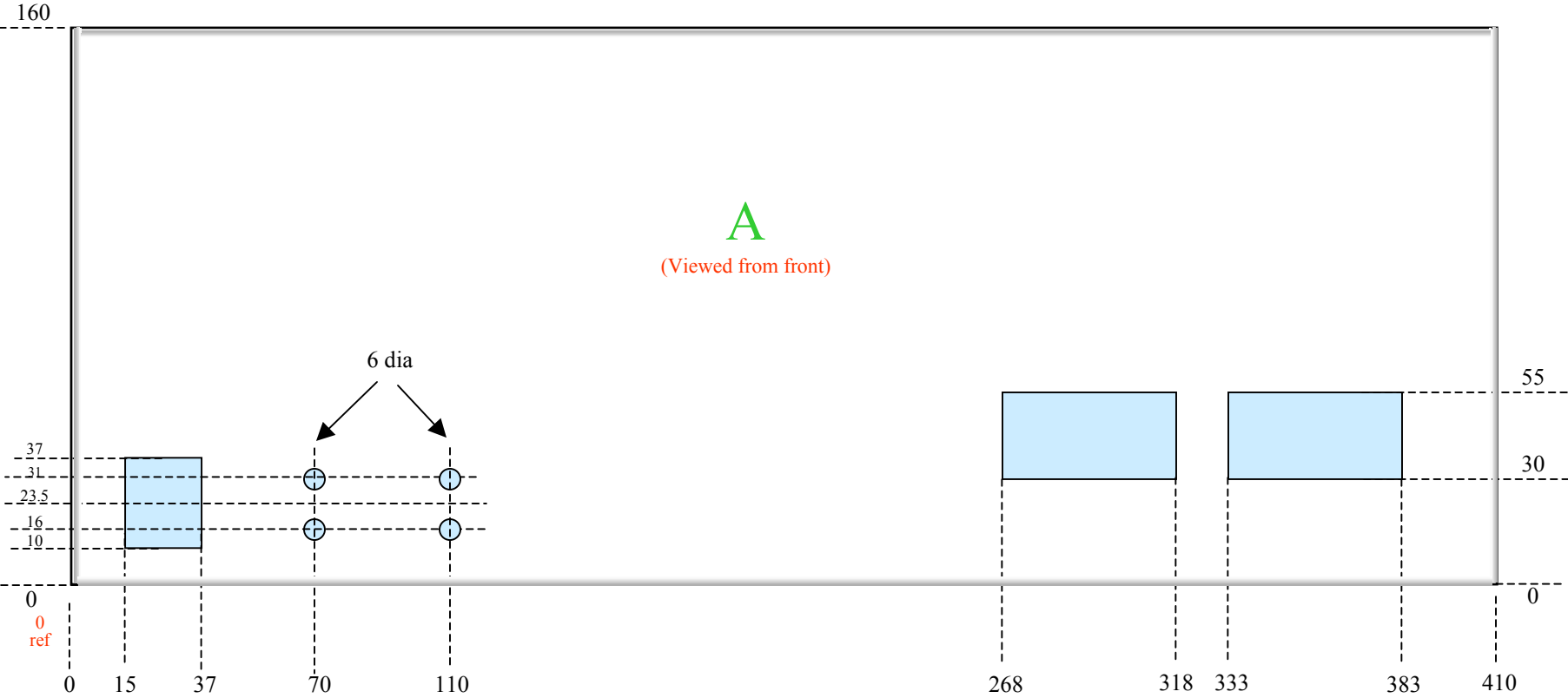
Note: Overall maximum dimensions must not exceed - 410 x 164 x 220



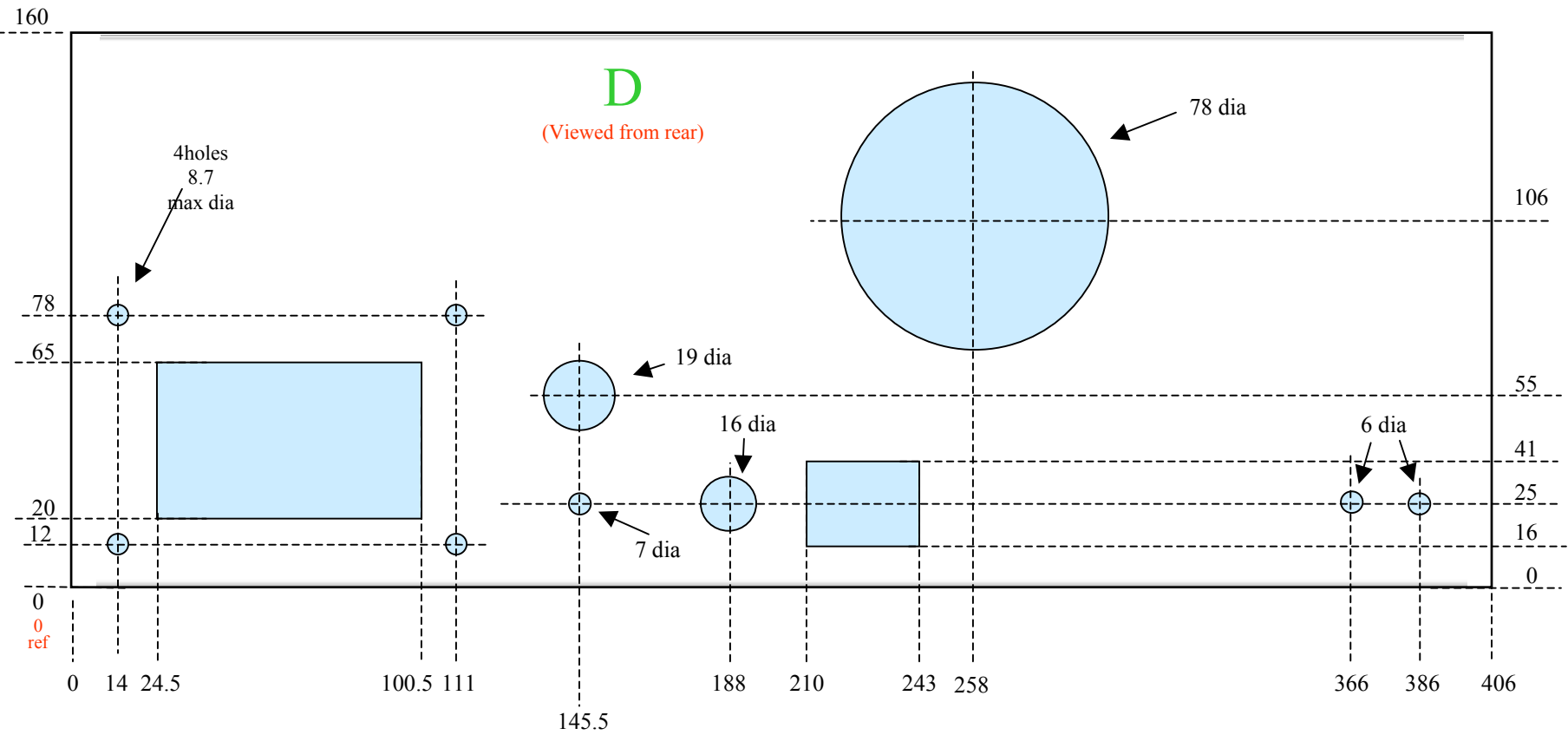
Top & Bottom Panel construction



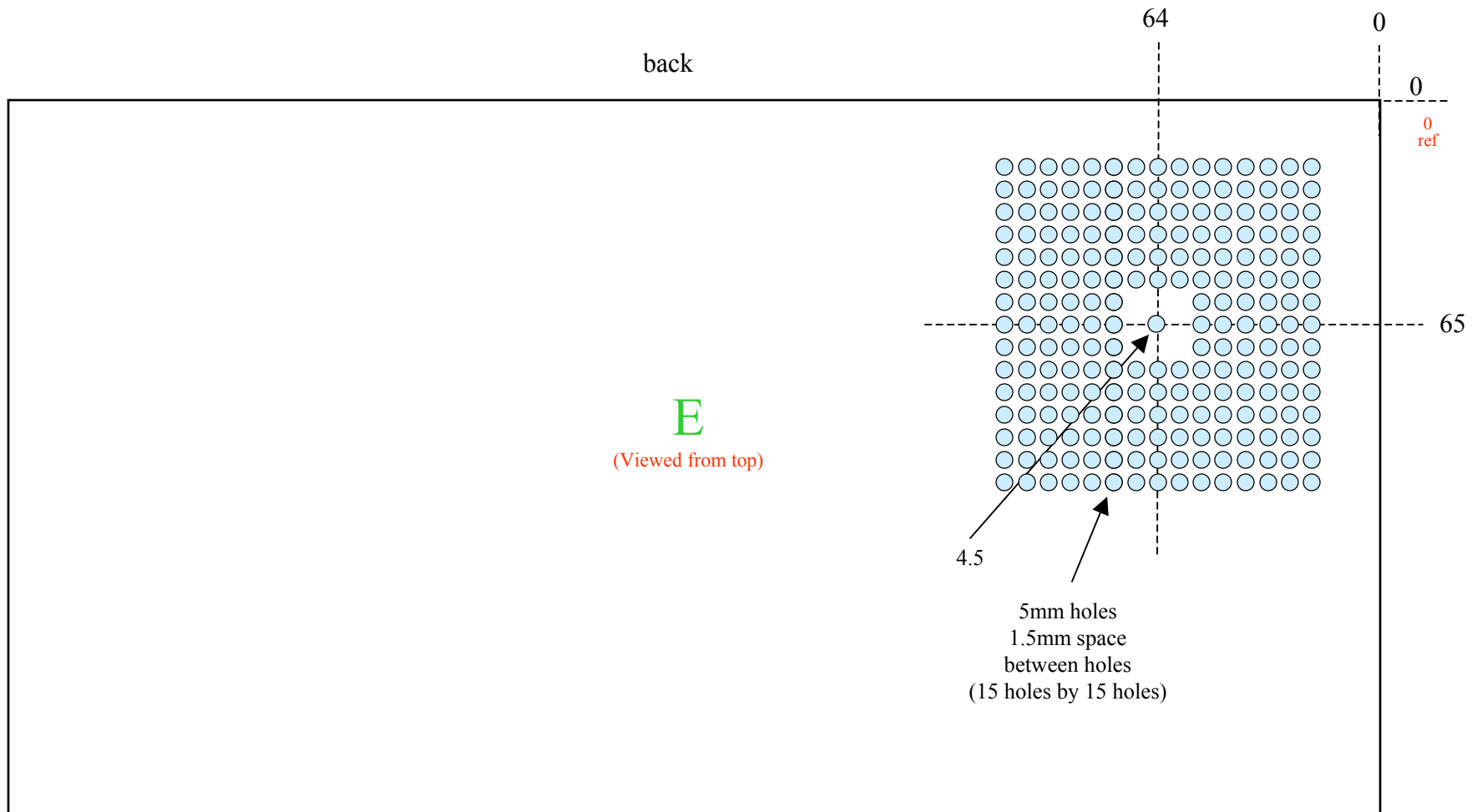
Front Panel Cut-outs



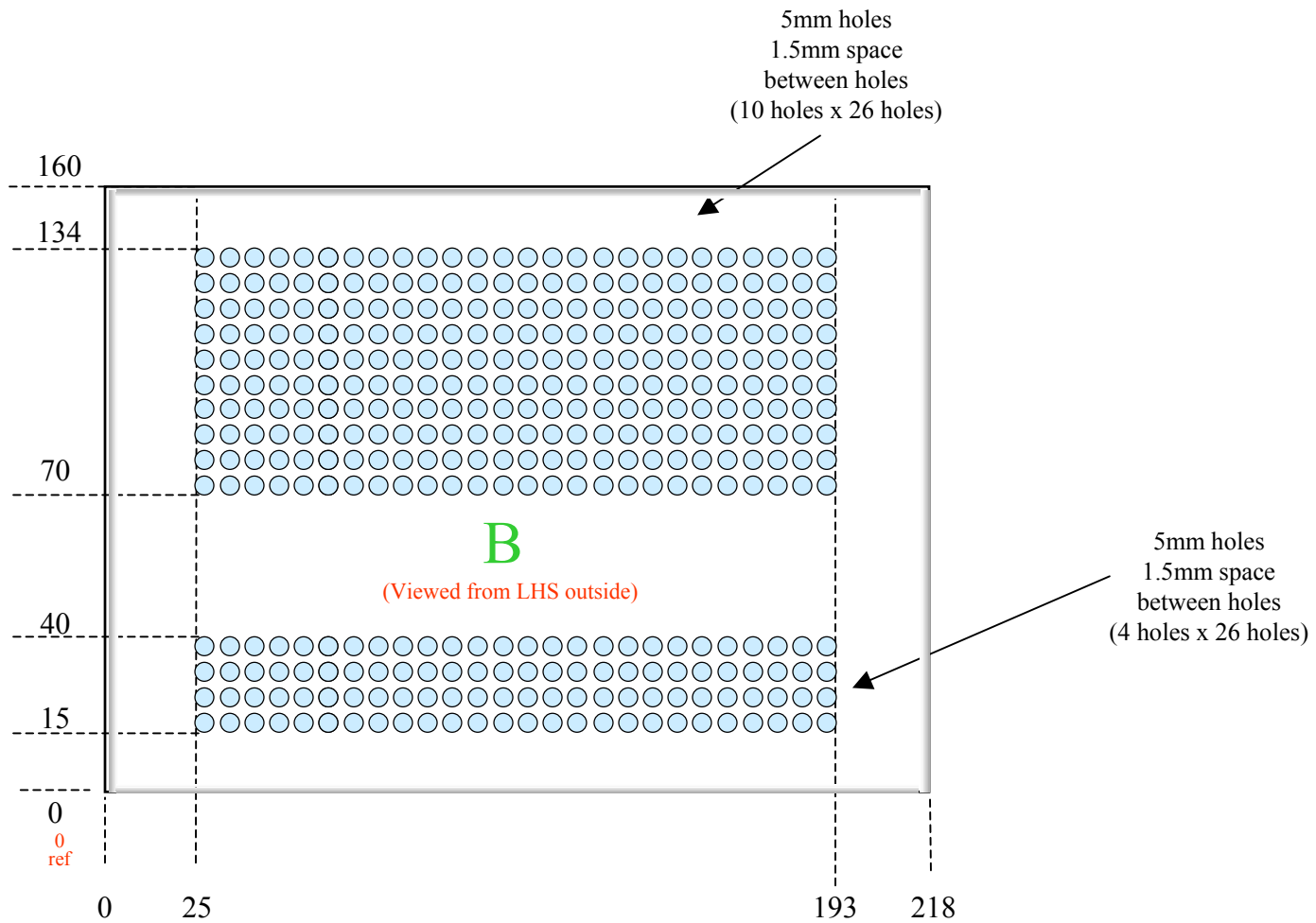
Back panel – Cut-outs



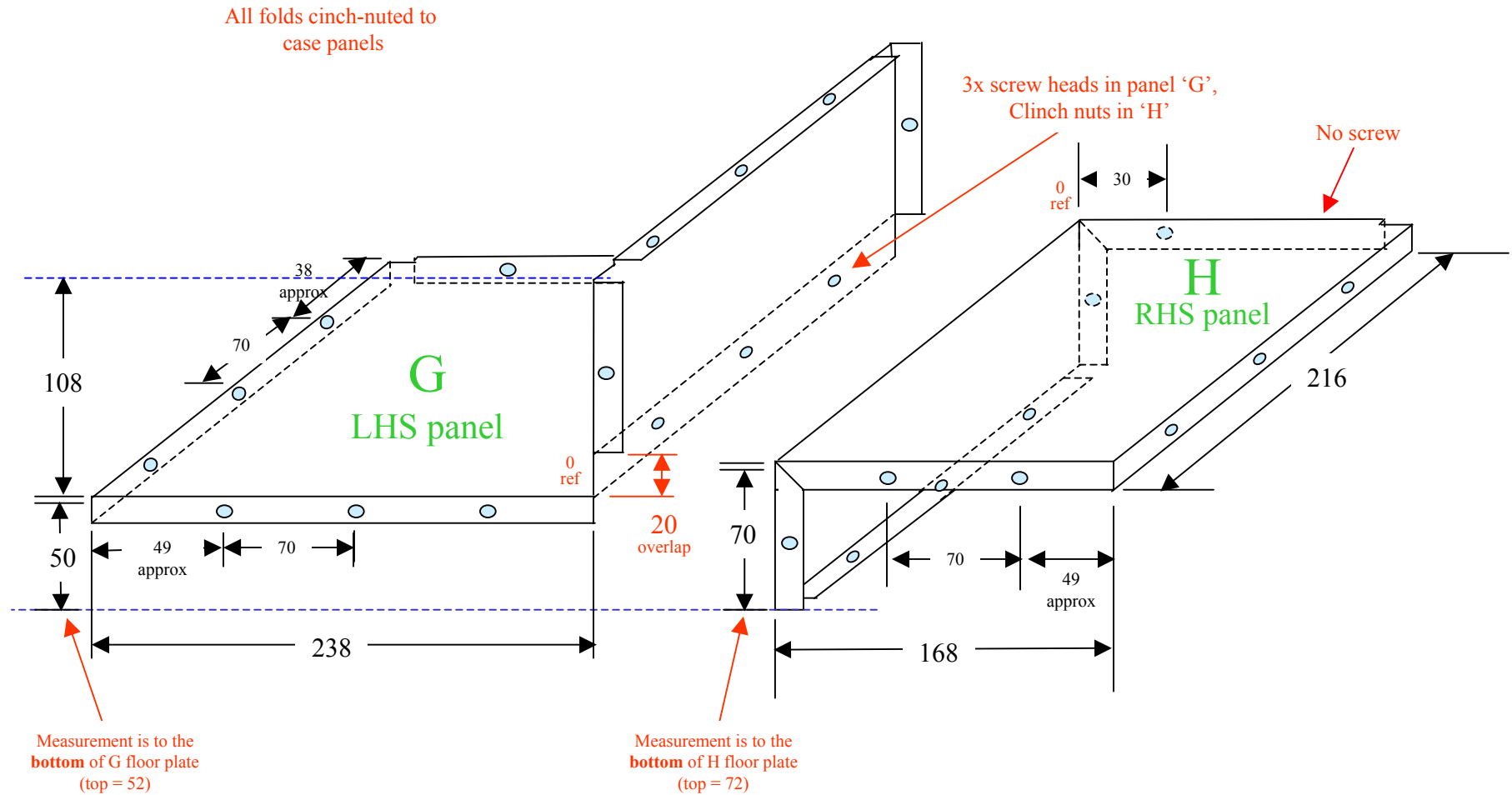
Top panel Cut-outs



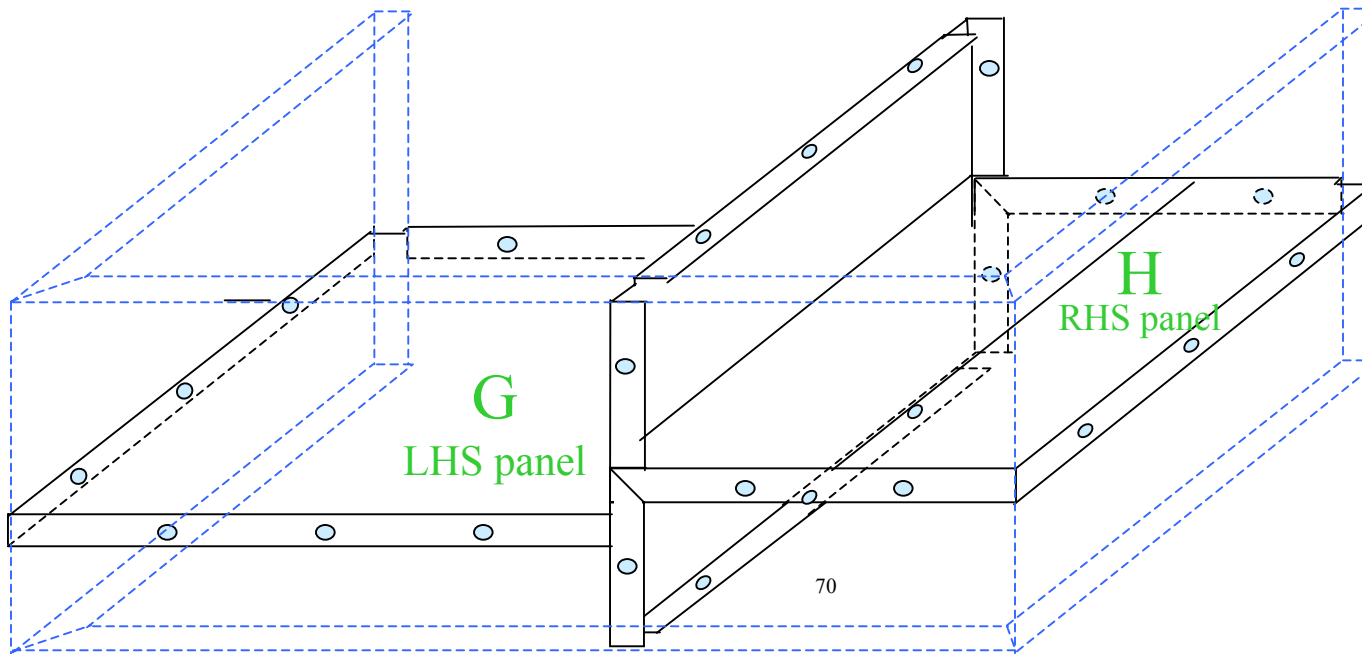
LHS Side panel Cut-outs



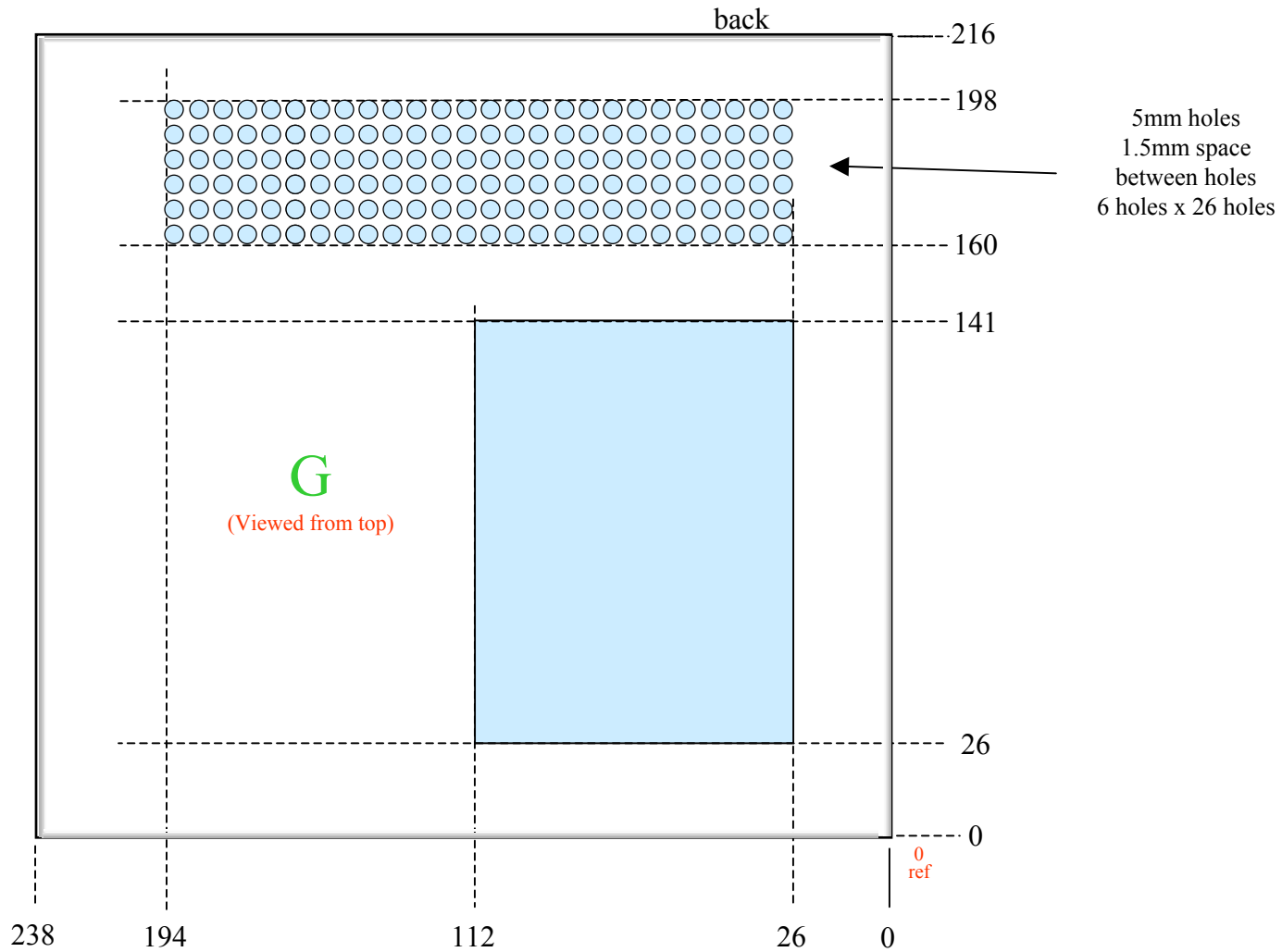
Internal Floor Construction



Internal Floor Panels Layout



LHS Internal Floor Cut-outs



RHS Internal Floor Cut-outs

